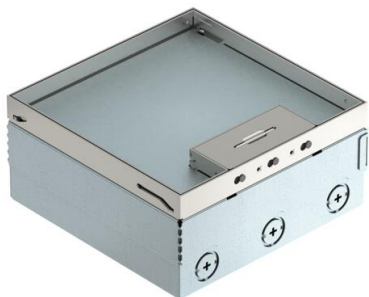


Technical data sheet

UDHOME4 floor box, with universal support UT3 45 3, triple VDE, stainless steel
Item number: 7427216



Square floor box for use in dry-cleaned cavity and screed floors in indoor areas. Installation housing with pre-marked insertion openings for pipes (M25). With two UT3 45 3 universal supports and a triple protective contact socket. Cover adjustable to top edge of floor covering using four height-adjustment supports. The minimum installation depth is 95 mm, the height-adjustment range + 30 mm. The scope of delivery contains two universal supports UT3 45 3 and a triple protective contact socket. Up to three additional M45 devices can be installed. Surfaces made of stainless steel and visible in the floor covering.



A2 Stainless steel

Master data

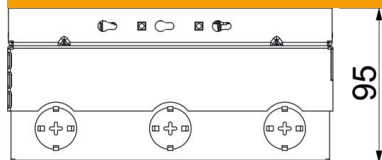
Item number	7427216
Type	UDHOME4 2V UT V
Description 1	Floor box, complete
Description 2	3way protective contact socket
Manufacturer	OBO
Material	Stainless steel 1.4301
Smallest sales unit	1
Unit of quantity	Piece
Weight	413 kg
Weight unit	kg/100 pc.
CO2 Footprint (GWP) Cradle-to-Gate	18,176 kg CO2e / 1 Piece

Technical data sheet

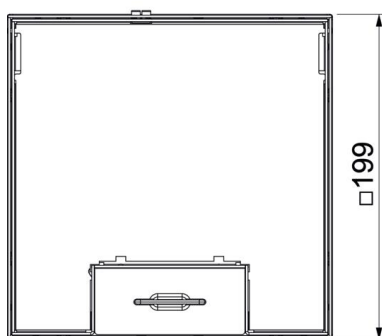
UDHOME4 floor box, with universal support UT3 45 3, triple VDE, stainless steel
Item number: 7427216



Dimensions



Length	202 mm
Width	202 mm



Technical data

Number of mounting boxes	2
Version for	Square
Cable outlet version	Swivellable cord outlet
Equipment	2 UT3, triple VDE socket
Floor covering protection frame	no
Cover version	Floor covering recess
Screed height, max.	110 mm
Screed height, min.	95 mm
Floor height, max.	125 mm
Floor height, min.	95 mm
Suitable for raised floor installation	no
Suitable for cavity floor installation	yes
Suitable for wet care	no
Suitable for underfloor ducts	no
Length of external dimensions	199 mm
Length of installation dimensions	202 mm
With floor covering recess	yes
Height-adjustment range, max.	125 mm
Height-adjustment range, min.	95 mm
Protection rating (IP) when used	IP20
Protection rating (IP) when unused	IP40
Protection rating IK code	IK10
Vertical load, large area	to 5,000 N
Vertical load, small area	to 3,000 N
Opening mechanism	Handle
Floor covering thickness	15 mm